

Interim Results Presentation

27 July 2011

Today's presentation

- Highlights and business overview: Peter Crook
- Financial review: Andrew Fisher
- Regulatory update and outlook: Peter Crook
- Questions

Highlights and business overview

Peter Crook – Chief Executive

Highlights

Continued good progress

- Profit before tax up 15.4% to £62.3m
- Cautious approach to extending credit yielding favourable impairment trends in both businesses
- Home Credit performance underpinned by focus on serving good-quality existing customers
- Strong growth and favourable delinquency trends at Vanquis Bank generating above target returns
- Headroom on committed bank facilities, **before deposit taking**, of £280m sufficient to fund growth and contractual maturities until late 2012
- Retail deposits programme activated at Vanquis Bank
- Increase in interim dividend by 5.1% to 26.7 pence per share, supported by earnings growth and strong capital generation

Deposit taking activated

The screenshot shows the Vanquis Bank High Yield website. At the top, the Vanquis Bank logo is displayed above a large 'HIGH YIELD' banner. Below this is a navigation menu with links for Home, About Us, FAQ, Contact Us, and Apply Now. The main content area features a green box titled 'High Yield Fixed Rate Bonds' with interest rates of up to 3.70% gross/AER*. It lists terms of 1 and 2 years, a guaranteed return, investment amounts from £10,000 to £250,000, and FSCS protection up to £85,000 per depositor. An 'Apply Now' button is present. To the right, an 'Interest Rates' section provides a breakdown of rates as of 21/07/2011, listing rates for 1-year and 2-year fixed rate bonds in both annual and monthly terms. A footer contains links for Terms of Use, Privacy Statement, Accessibility, Terms & Conditions, and Site Map.

VANQUIS BANK
HIGH YIELD

Home About Us FAQ Contact Us Apply Now

High Yield Fixed Rate Bonds

interest rates of up to **3.70%** gross/AER*

1 and 2 year terms

Guaranteed return on your savings

Invest from £10,000 to £250,000

Up to £85,000 per depositor protected by the FSCS

[Apply Now](#)

Interest Rates

Below is a breakdown of our interest rates as of 21/07/2011

1 Year Fixed Rate Bond

- annual 3.45% gross/AER*
- monthly 3.40% gross/AER*

2 Year Fixed Rate Bond

- annual 3.70% gross/AER*
- monthly 3.64% gross/AER*

[Terms of Use](#) [Privacy Statement](#) [Accessibility](#) [Terms & Conditions](#) [Site Map](#)

These bonds are a limited offer and may be withdrawn at any time.
*AER stands for annual equivalent rate and illustrates the interest rate if it was paid and compounded once each year.

*AER stands for annual equivalent rate and illustrates the interest rate if it was paid and compounded once each year.
Important: Acceptance of bond applications are subject to: confirmation of name and address; valid identification; UK residents only; minimum 18 years of age. Our bonds are a limited offer and may be withdrawn at any time. Please read our Terms and Conditions.
Vanquis Bank High Yield is issued by Vanquis Bank Limited registered in England & Wales with company number 2558509, with its registered office at Colonnade, Sunbridge Road, Bradford, West Yorkshire, BD1 2LQ until 1 August 2011 and at No. 1 Godwin Street, Bradford, West Yorkshire, United Kingdom, BD1 2SU from 2 August 2011.
Vanquis Bank Limited is authorised and regulated by the Financial Services Authority and is registered in the Financial Services Authority register with the following registration number: 221156. Vanquis Bank Limited's registered VAT number is 180555952.
Should you wish to contact Vanquis Bank Limited please refer to the Contact Us tab which can be found on each page of this site.
©Vanquis Bank Ltd 2011

Market conditions and business positioning - Home Credit

Market conditions

- Competitive landscape little changed
- Customer behaviour less cautious than 12 months ago
- Under-employment remains an issue for many households and inflation is creating pressure on disposable incomes
- Welfare changes having limited impact on customer base with changes to individual customer circumstances factored into agents' normal lending decisions

Business positioning

- Business plan for 2011 based on modest receivables growth
- Tighter stance on underwriting to new customers reducing headline growth in customer numbers
- Emphasis continues to be on re-serving good quality existing customers to generate receivables growth
- Collections performance benefitting from improving credit quality and enhancements to agents' commission scheme

Market conditions and business positioning - Vanquis Bank

Market conditions

- Vanquis Bank remains the most active participant in the non-standard credit card market
- Strong flow of applications from both direct mail and internet channels
- Unemployment remains stable
- Consumers in the wider non-standard market still carrying too much debt

Business positioning

- No change to tight underwriting and credit line increase criteria
- Strict adherence to only serving customers with limited indebtedness
- More intensive marketing programme since mid-2010 driving strong growth in customer base
- Improving underlying quality of the book and favourable delinquency trends generating above target returns
- No near-term relaxation of credit standards due to uncertainty over direction of employment market
- Plans well-advanced for Bradford based call centre to increase capacity

Market conditions and business positioning

Summary

- Management's approach in both businesses proving effective in current market conditions
- No change to cautious stance on extending new credit in recognition of continuing pressure on real incomes and uncertainty over future direction of employment market
- Sound credit quality in both businesses provides foundation for delivering good-quality growth for 2011 as a whole

Financial review

Andrew Fisher – Finance Director

Group - Profit before tax

Six months ended 30 June	2011 £m	2010 £m	Change £m
Home Credit	50.2	51.1	(0.9)
Real Personal Finance	-	(1.8)	1.8
Vanquis Bank	17.6	9.1	8.5
Central:			
- Costs	(4.9)	(4.1)	(0.8)
- Interest payable	(0.6)	(0.3)	(0.3)
Total central	(5.5)	(4.4)	(1.1)
Profit before tax	62.3	54.0	8.3
Basic earnings per share	34.3p	29.5p	

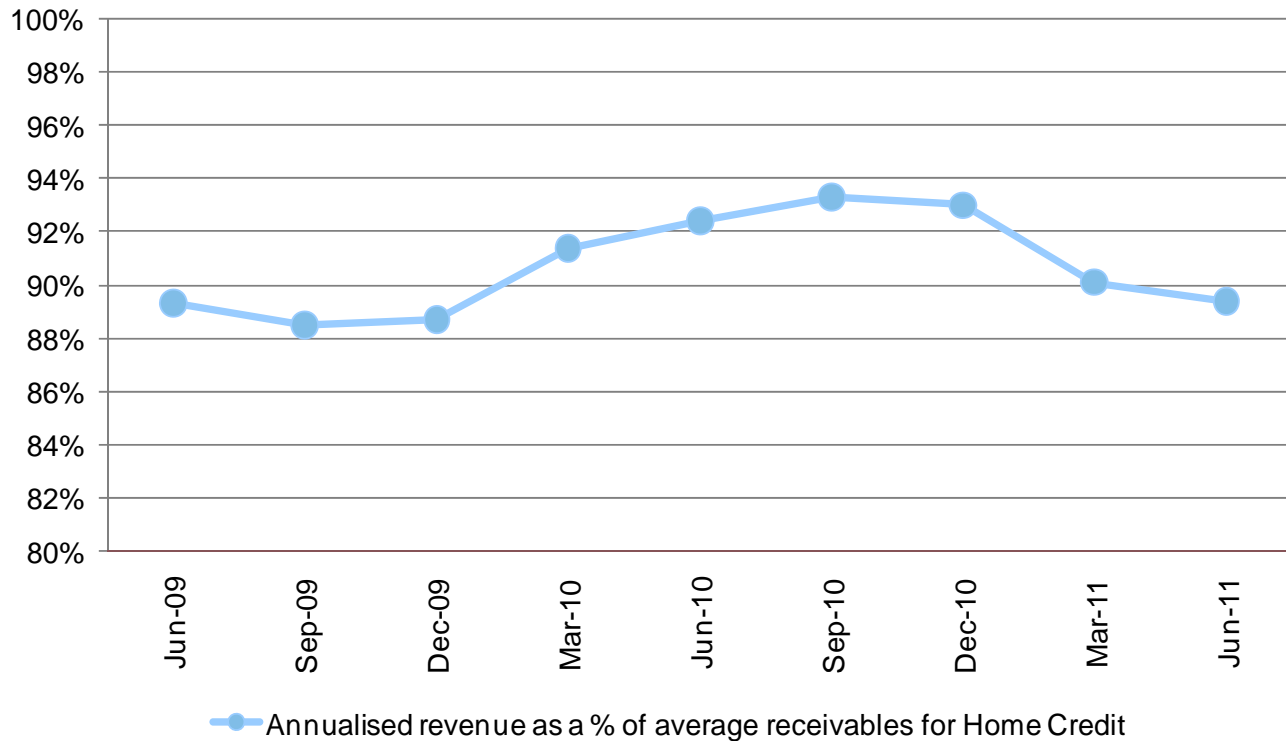
Home Credit - Income statement

Six months ended 30 June	2011 (26 weeks) £m	2010 (27 weeks) £m	Change
Customer numbers ('000)	1,803	1,805	(0.1%)
Period-end receivables	785.5	747.7	5.1%
Average receivables	784.3	749.5	4.6%
Revenue	350.2	362.3	(3.3%)
Impairment	(130.1)	(145.8)	10.8%
Revenue less impairment	220.1	216.5	1.7%
<i>Annualised revenue yield*</i>	89.4%	92.4%	
<i>Annualised impairment % revenue**</i>	31.2%	33.3%	
Costs	(146.7)	(140.8)	(4.2%)
Interest	(23.2)	(24.6)	5.7%
Profit before tax	50.2	51.1	(1.8%)

* Revenue as a percentage of average receivables for the 12 months ended 30 June

** Impairment as a percentage of revenue for the 12 months ended 30 June

Home Credit - Revenue yield



- Revenue yield moderated during first half of 2011 as previously indicated
- Reflects focus on serving good-quality existing customers who tend to be served with slightly longer term products
- Yield likely to remain around 90% for the remainder of 2011

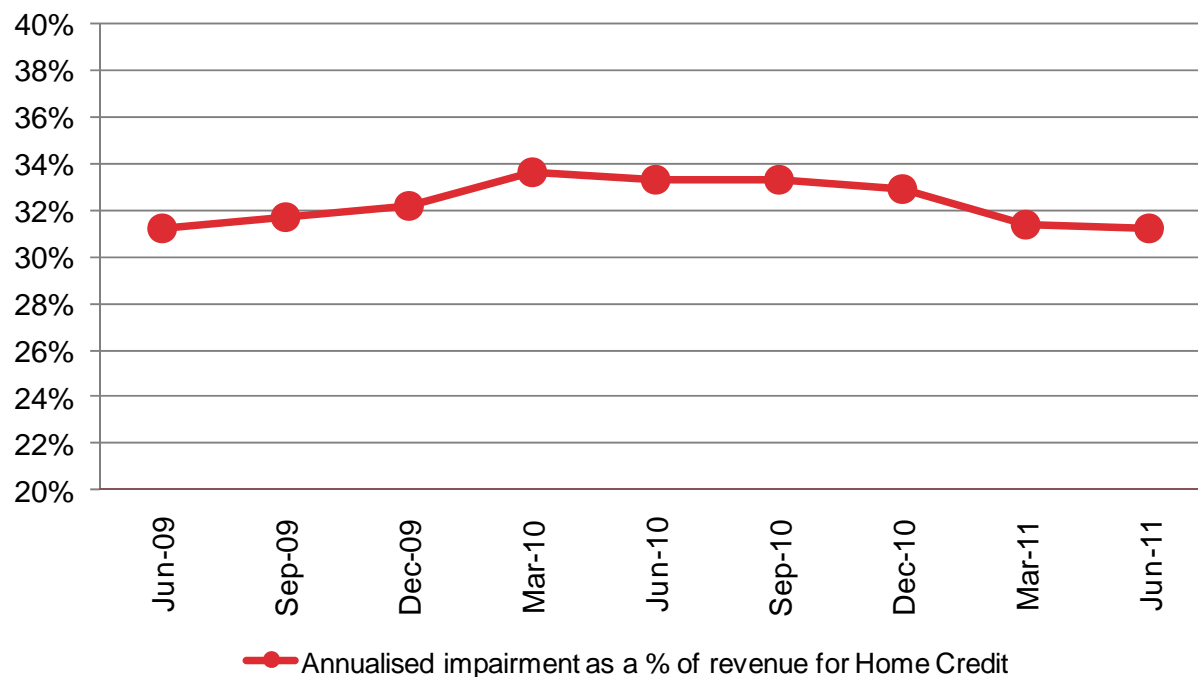
Home Credit - Income statement

Six months ended 30 June	2011 (26 weeks) £m	2010 (27 weeks) £m	Change
Customer numbers ('000)	1,803	1,805	(0.1%)
Period-end receivables	785.5	747.7	5.1%
Average receivables	784.3	749.5	4.6%
Revenue	350.2	362.3	(3.3%)
Impairment	(130.1)	(145.8)	10.8%
Revenue less impairment	220.1	216.5	1.7%
<i>Annualised revenue yield*</i>	89.4%	92.4%	
<i>Annualised impairment % revenue**</i>	31.2%	33.3%	
Costs	(146.7)	(140.8)	(4.2%)
Interest	(23.2)	(24.6)	5.7%
Profit before tax	50.2	51.1	(1.8%)

* Revenue as a percentage of average receivables for the 12 months ended 30 June

** Impairment as a percentage of revenue for the 12 months ended 30 June

Home Credit - Impairment as a % of revenue



- Strong first half collections performance reflects tighter underwriting and improvement in quality of the book
- Enhancements to agents' commission scheme are proving effective
- Impairment rates expected to remain within the range experienced over the last 12 months

Home Credit - Impairment policy

- Based on last 12 weeks payment performance
- Loans deemed impaired if more than 1 contractual weekly payment missed in previous 12 weeks
- 95%+ provision against loans for which no payment received in last 12 weeks

Timely, realistic provisioning which has been applied consistently and reinforces the right behaviour amongst agents and employees

Home Credit - IFRS 7 disclosures

	2011 %	2010 %
In order	31.6	30.4
In arrears:		
- Past due but not impaired	11.8	12.6
- Impaired	56.6	57.0
Total	100.0	100.0

Home Credit - Income statement

Six months ended 30 June	2011 (26 weeks) £m	2010 (27 weeks) £m	Change
Customer numbers ('000)	1,803	1,805	(0.1%)
Period-end receivables	785.5	747.7	5.1%
Average receivables	784.3	749.5	4.6%
Revenue	350.2	362.3	(3.3%)
Impairment	(130.1)	(145.8)	10.8%
Revenue less impairment	220.1	216.5	1.7%
<i>Annualised revenue yield*</i>	89.4%	92.4%	
<i>Annualised impairment % revenue**</i>	31.2%	33.3%	
Costs	(146.7)	(140.8)	(4.2%)
Interest	(23.2)	(24.6)	5.7%
Profit before tax	50.2	51.1	(1.8%)

* Revenue as a percentage of average receivables for the 12 months ended 30 June

** Impairment as a percentage of revenue for the 12 months ended 30 June

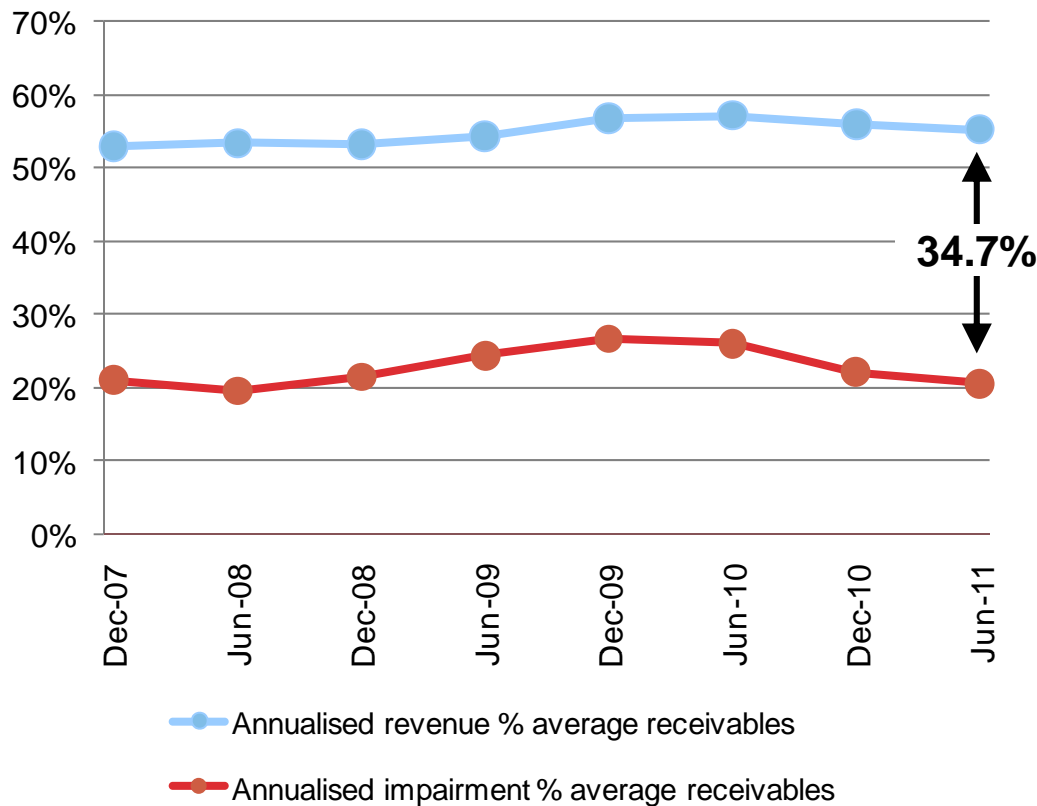
Vanquis Bank - Income statement

Six months ended 30 June	2011 £m	2010 £m	Change
Customer numbers ('000)	610	483	26.3%
Period-end receivables	380.1	281.2	35.2%
Average receivables	361.6	265.3	36.3%
Revenue	99.3	74.7	32.9%
Impairment	(38.9)	(33.3)	(16.8%)
Revenue less impairment	60.4	41.4	45.9%
<i>Annualised risk-adjusted margin*</i>	34.7%	31.1%	
<i>Annualised impairment % revenue**</i>	37.2%	45.6%	
Costs	(31.7)	(23.9)	(32.6%)
Interest	(11.1)	(8.4)	(32.1%)
Profit before tax	17.6	9.1	93.4%

* Revenue less impairment as a percentage of average receivables for the 12 months ended 30 June

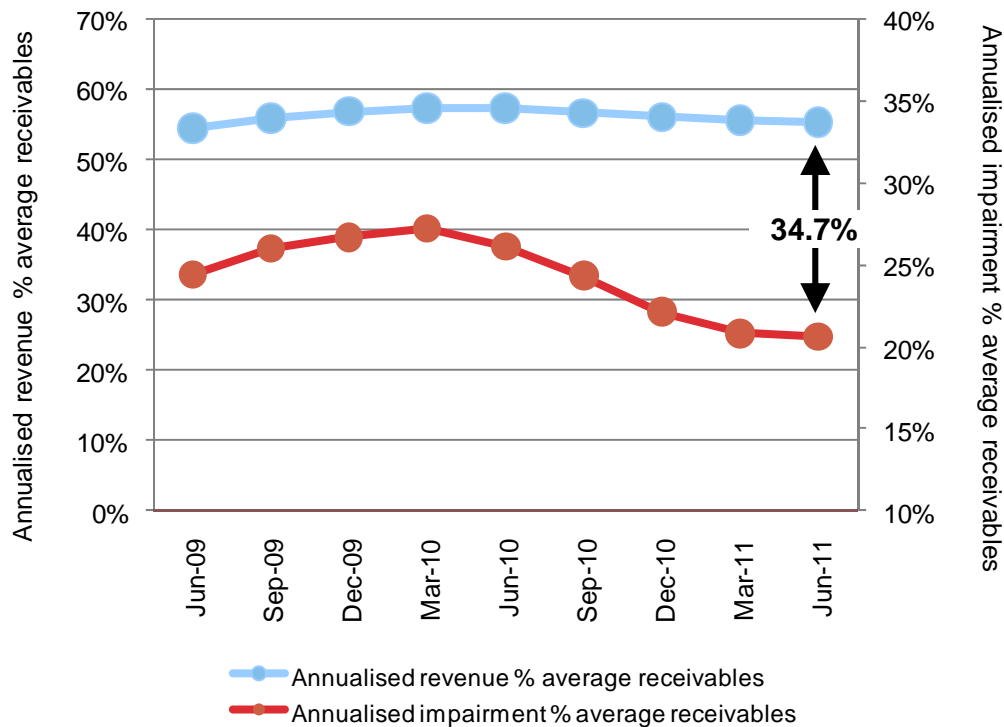
** Impairment as a percentage of revenue for the 12 months ended 30 June

Vanquis Bank - Maintaining the risk-adjusted margin



- Risk-adjusted margin of 34.7%, well above minimum target of 30%
- Stable risk-adjusted margin underpinned by active management of:
 - Credit line utilisation to minimise contingent undrawn exposure
 - Revenue yield through appropriate pricing for risk
- Expansion of risk-adjusted margin in 2010 and 2011

Vanquis Bank - Expansion of the risk-adjusted margin



- Margin expansion reflects:
 - Improvement in underlying quality of receivables book
 - Tightening of underwriting from 2007 to mid-2009
 - Consistent application of tight underwriting since mid-2009 in a stable employment market
 - Reduction in delinquency rates which has added 1.5% (£5m) to the annualised risk-adjusted margin of 34.7%

Vanquis Bank - Impairment policy

- Loans deemed to be impaired as soon as 1 contractual monthly payment is missed
- Provision of over 80% made against accounts that are 90 days in arrears*

Realistic accounting policy applied consistently which is prudent when benchmarked against other card issuers

* Subject to estimated realisations from central/third party debt recovery processes

Vanquis Bank - IFRS 7 disclosures

	2011 %	2010 %
In order	87.9	83.7
In arrears:		
- Past due but not impaired	-	-
- Impaired	12.1	16.3
Total	100.0	100.0

Vanquis Bank - Income statement

Six months ended 30 June	2011 £m	2010 £m	Change
Customer numbers ('000)	610	483	26.3%
Period-end receivables	380.1	281.2	35.2%
Average receivables	361.6	265.3	36.3%
Revenue	99.3	74.7	32.9%
Impairment	(38.9)	(33.3)	(16.8%)
Revenue less impairment	60.4	41.4	45.9%
<i>Annualised risk-adjusted margin*</i>	34.7%	31.1%	
<i>Annualised impairment % revenue**</i>	37.2%	45.6%	
Costs	(31.7)	(23.9)	(32.6%)
Interest	(11.1)	(8.4)	(32.1%)
Profit before tax	17.6	9.1	93.4%

* Revenue less impairment as a percentage of average receivables for the 12 months ended 30 June

** Impairment as a percentage of revenue for the 12 months ended 30 June

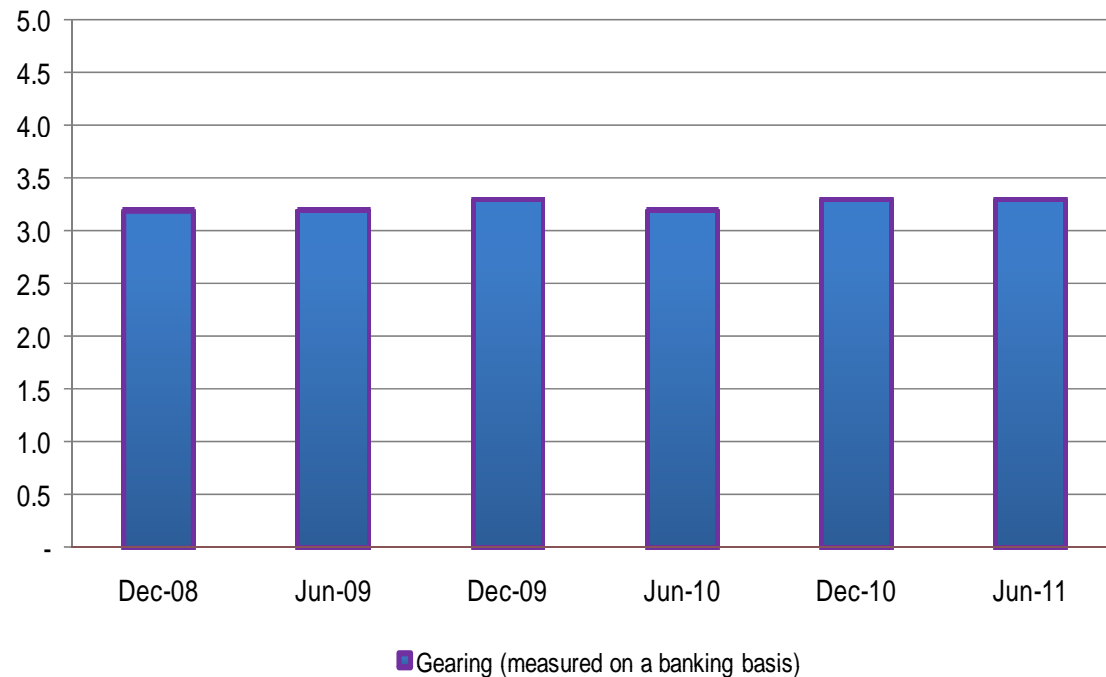
Strong balance sheet

As at 30 June	2011 £m	2010 £m
Receivables:		
- Home Credit	785.5	747.7
- Real Personal Finance	3.9	10.8
- Vanquis Bank	380.1	281.2
	1,169.5	1,039.7
Pension asset	58.9	1.0
Liquid assets buffer	10.8	-
Borrowings*	(930.6)	(818.5)
Other	9.9	22.1
Net assets	318.5	244.3
Equity**: Receivables	21.0%	21.3%
Gearing**	3.3x	3.2x

* after adjusting for the fair value of derivatives used to hedge US\$ private placement notes and arrangement fees

** on a banking basis equity excludes the pension asset and the fair value of derivatives both net of deferred tax

Modest gearing levels



- Gearing at June 2011 of 3.3 times versus a banking covenant of 5.0 times
- Strong capital generation has funded dividends and growth leaving gearing unchanged

Diversified funding base

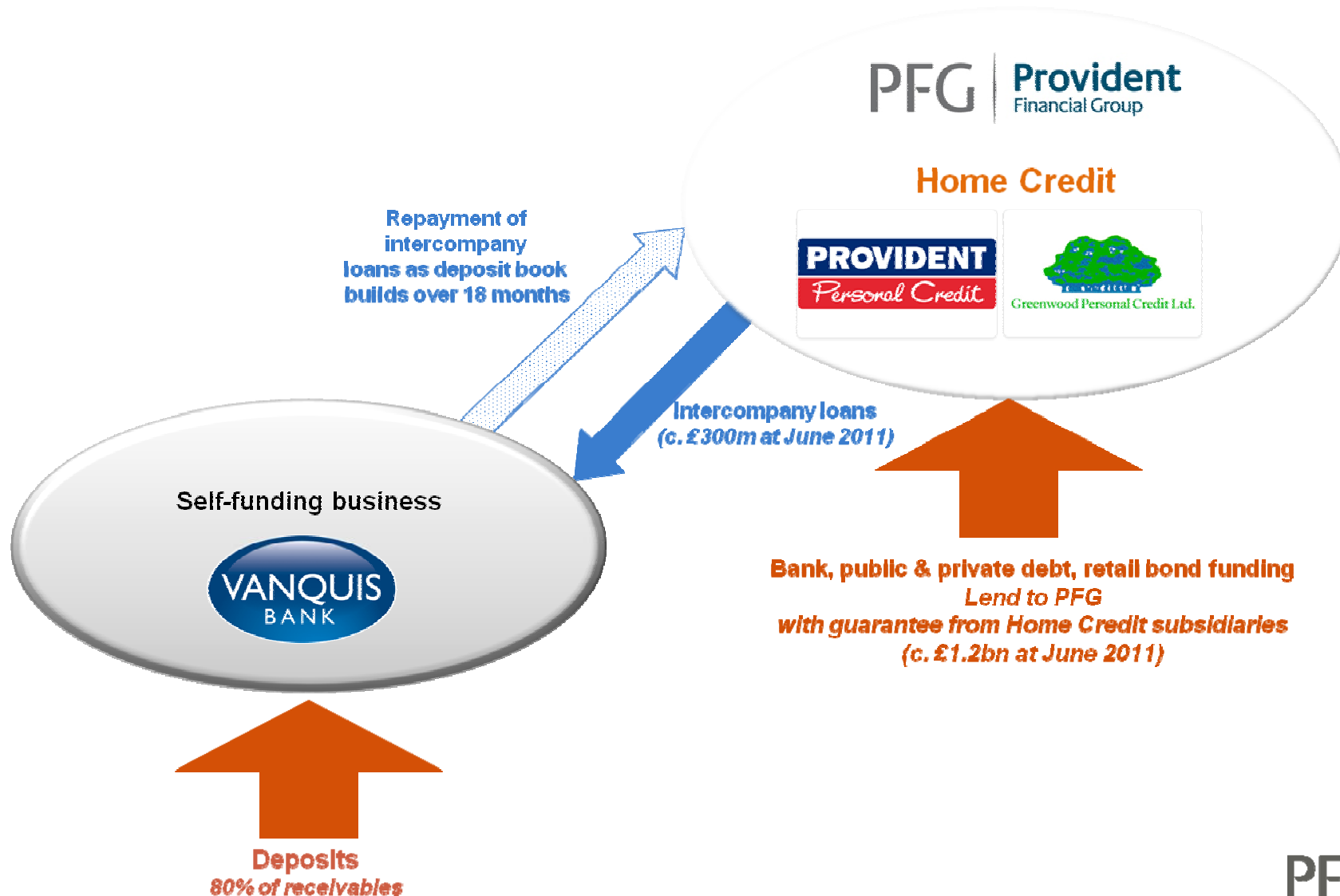
	Originated	£m
Banks		
UK-centric bank group	2010	420
Non-extending overseas banks	2007	197
		617
Bonds and private placements		
Senior public bond	2009	250
M&G term loan	2011	100
Other sterling/euro medium term notes	2011	42
Retail bonds - Issue 1	2010	25
- Issue 2	2011	50
US private placements	Pre-2006	103
Residual subordinated bonds	2005	6
		576
Vanquis Bank retail deposits		-
Total committed facilities		1,193
Headroom on committed bank facilities at 30 June 2011		280
Originated in past 2 years		887

Maturities and funding

Maturities	£m	Funding
2011		
US private placements	16	<ul style="list-style-type: none"> Extension by May 2012 of UK-centric bank group facilities of £420m maturing in May 2013
2012		
Non-extending overseas banks	197	
2013		
UK-centric bank group	420	<ul style="list-style-type: none"> Vanquis Bank deposit programme to provide £300m of funding by end of 2012
US private placements	49	
2014		
US private placements	38	<ul style="list-style-type: none"> Retail bond market (raised £50m in March 2011)
2015		
Residual subordinated bonds	6	

- Continue with Treasury programme to maintain and develop options in bank, private placement, public debt and securitisation markets

Vanquis as a self-funding business



Retail deposits programme

- Fixed term deposits of typically 1 to 3 years
- Redeemable only in the event of death or mandated legal reasons
- 18 month programme to build funding to 80% of Vanquis Bank's receivables
- Offered through internet best-buy tables (e.g. moneyfacts.co.uk, moneysupermarket.com, moneysavingexpert.com)
- Depositors covered by the FSCS up to £85,000
- Platform outsourced to a third party



**Fixed maturity
profile**

Strong capital generation

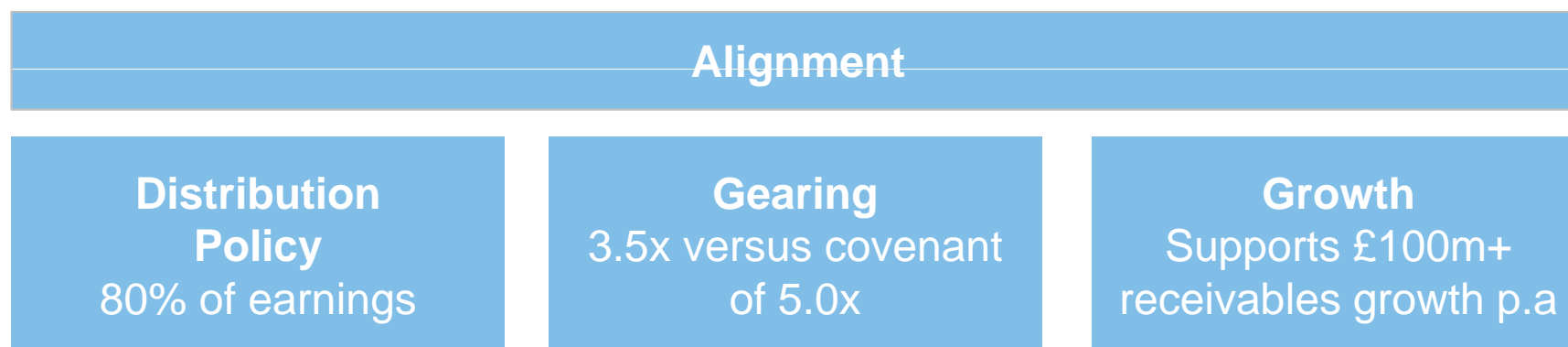
- Group generated £91.6m* of capital in the 12 months to 30 June 2011 compared with dividend payments of £84.9m
- Vanquis Bank is generating more than sufficient capital to fund its own growth and paid a maiden dividend of £5.0m to PFG in July
- Regulatory capital remains comfortably in excess of the revised ICG recently set by the FSA

* Before the one-off capital expenditure of £9.1m in respect of CCD's head office relocation in October 2010

Vanquis Bank - Capital generation

	Capital generation £m	Equity £m	Receivables £m	Equity to receivables %
At 31 December 2010		76.5	345.0	22.2
Profit after tax	12.9	12.9		
Other capital movements	(0.7)			
	12.2			
To fund growth in receivables (20% x £35.1m)	(7.0)			
Surplus capital generated	5.2			
Dividend	(5.0)	(5.0)		
At 30 June 2011	0.2	84.4	380.1	22.2

Alignment of dividend policy, gearing and growth



- Historic dividend of 63.5p per share, 1.25x covered at pre-tax profits of £145m
- 20% retention of profits supports receivables growth of more than £100m at 3.5x gearing
- Current gearing of 3.3x within target

Regulatory update

Peter Crook – Chief Executive

Regulation

Recent developments

- Relevant provisions of Irresponsible Lending Guidance to Creditors and EU Directive on Consumer Credit implemented by February 2011 as required
- Government published a summary of submissions received as part of its review of consumer credit and personal insolvency on 19 July and will publish its conclusions in the autumn

Outlook

Peter Crook – Chief Executive

Outlook

- Strength of group's balance sheet has been augmented by activating Vanquis Bank's retail deposits programme
- Credit quality in both businesses is very sound as evidenced by favourable impairment trends in first half and provides foundation for good quality growth for 2011 as a whole
- No change to cautious stance on extending new credit in recognition of the continuing pressure on real incomes and uncertainty over future direction of employment market

Questions

Provident Financial plc

Contact details

Provident Financial plc
No. 1 Godwin Street
Bradford
BD1 2SU

Contact: Gary Thompson – Group Financial Controller and Head of Investor Relations

Telephone: 01274 351019

E-mail: gary.thompson@providentfinancial.com

Website: www.providentfinancial.com